

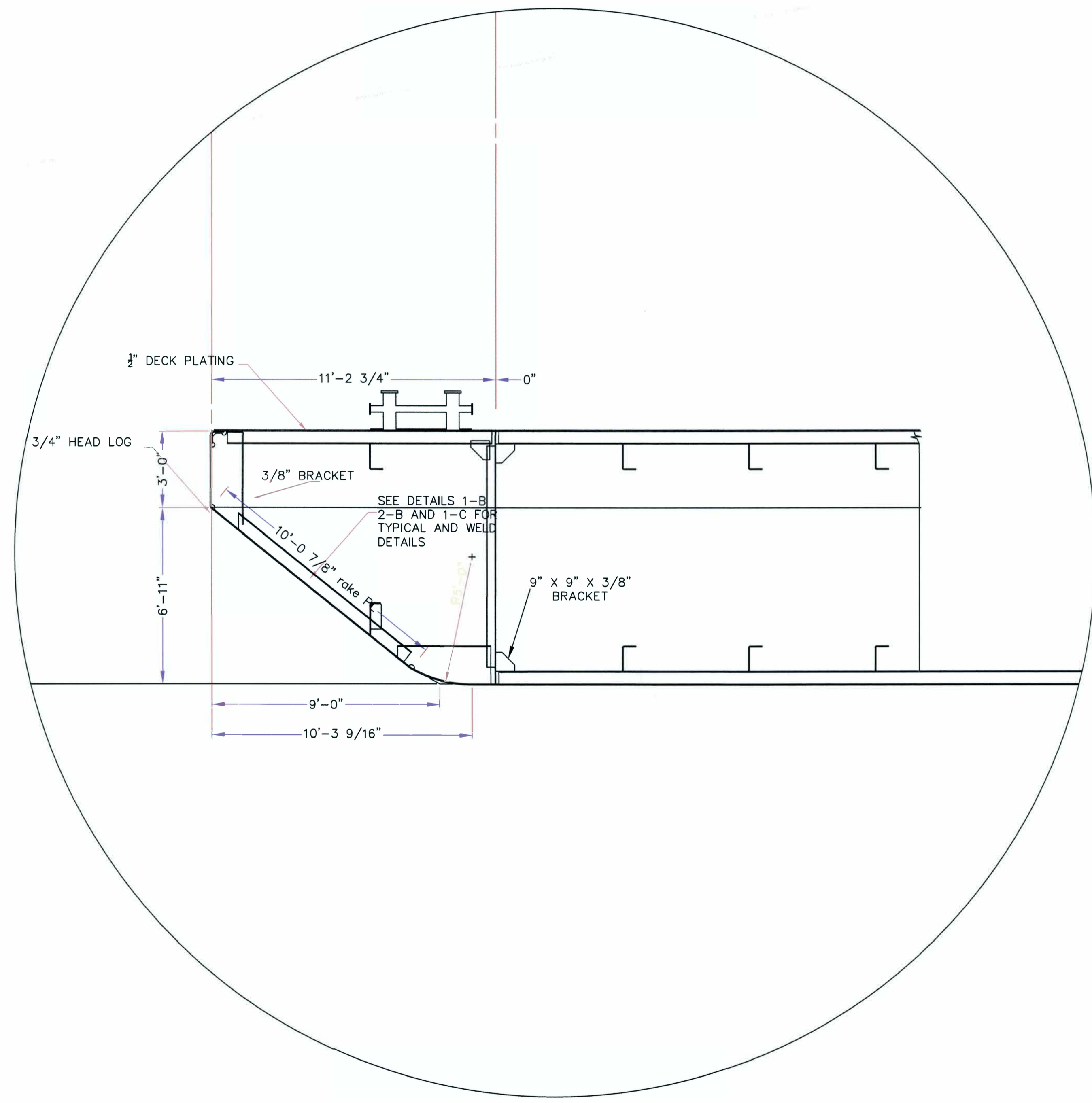
TYPICAL TRUSS FRAME

@ 5' CENTERS
 STANDING AFT
 LOOKING FWD

ANGLES 3/8" X 6" X 4"
QTY. PER TRANSVERSE FRAME
FOUR (4) @ 10'-6 11/16" LONG.
THREE (3) @ 7'-11" LONG.

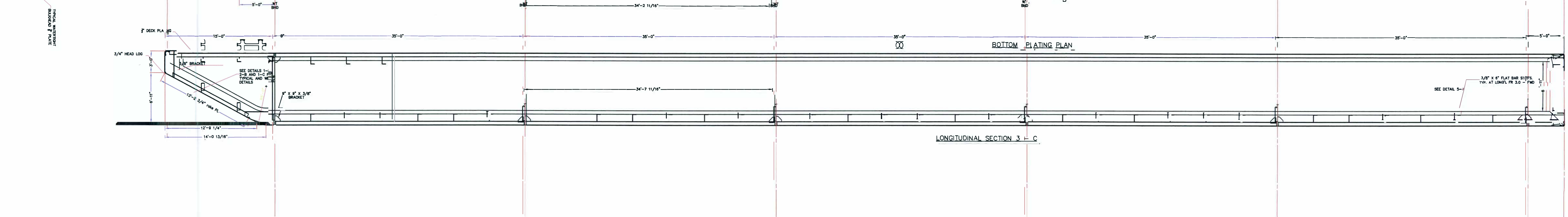
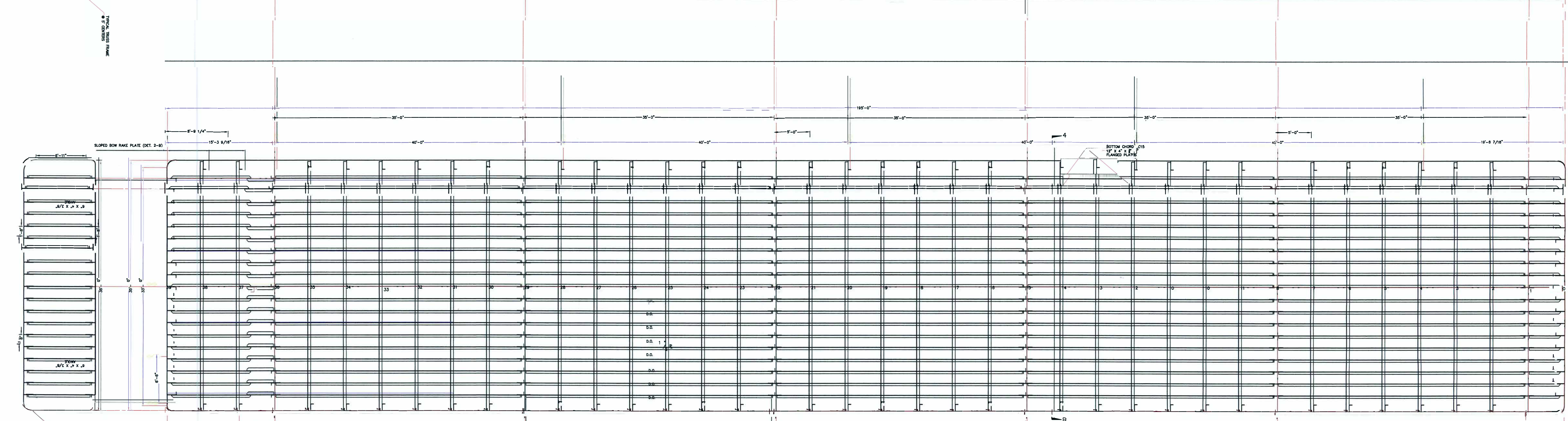
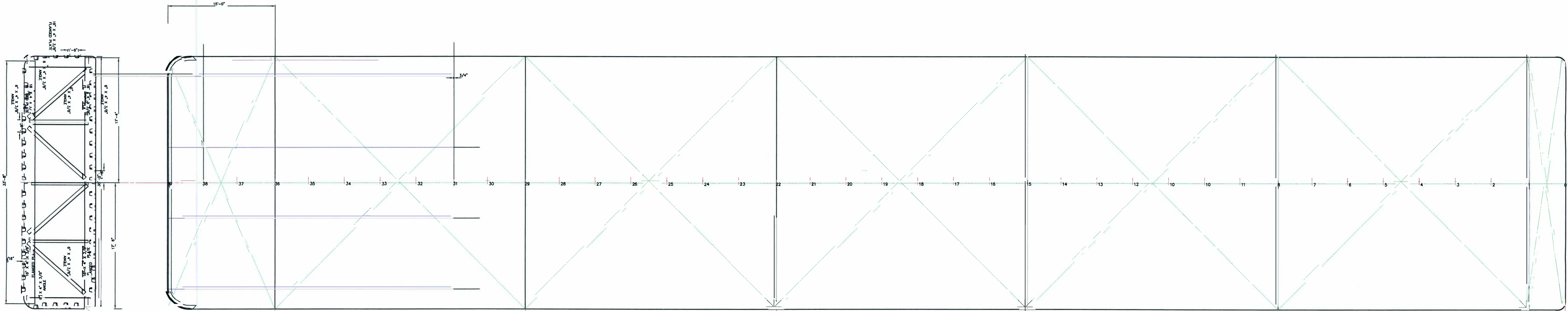
TYP. FRAME		
DWG. #	DATE	REV.
APPD.		

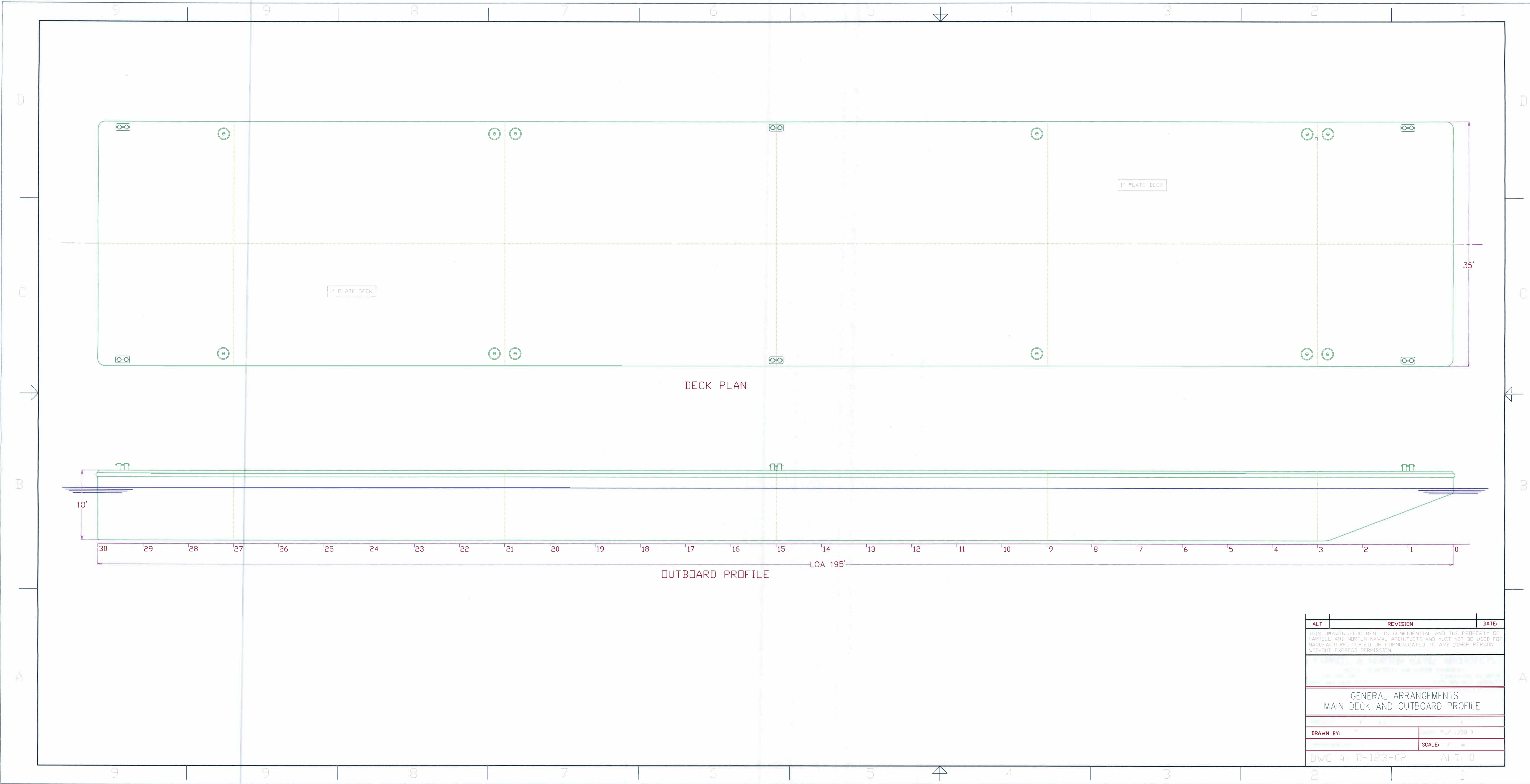
BOW LAYOUT



#		

DECK PLAN





DECK PLAN

OUTBOARD PROFILE

ALT	REVISION	DATE
<small>THIS DRAWING DOCUMENT IS CONFIDENTIAL AND THE PROPERTY OF FARRELL AND NORTON NAVAL ARCHITECTS AND MUST NOT BE USED FOR MANUFACTURE, COPIED, OR COMMUNICATED TO ANY OTHER PERSON WITHOUT EXPRESS PERMISSION.</small>		
GENERAL ARRANGEMENTS MAIN DECK AND OUTBOARD PROFILE		
DRAWN BY:		SCALE: 1/20
DWG #: D-123-02		ALT: 0